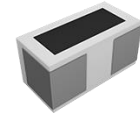


Multilayer Ultra High Q Chip Ceramic Inductor – UHQ-H Series

Operating Temp. : -55°C~+125°C



FEATURES

- Monolithic structure for high reliability
- High self-resonant frequency
- Excellent solderability and high heat resistance
- Super High Q value

APPLICATIONS

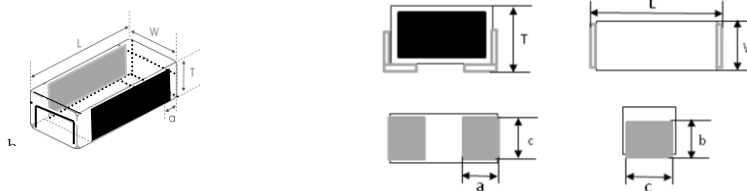
- RF circuit in telecommunication and other Equipments
- Mobile phones and other electronic devices
- Bluetooth, W-LAN

PRODUCT IDENTIFICATION

<u>UHQ</u>	<u>0402</u>	<u>H</u>	<u>3N9</u>	<u>B</u>	<u>P</u>	<u>01</u>																												
①	②	③	④	⑤	⑥	⑦																												
①	②		③		④																													
<table border="1"> <tr><th colspan="2">Type</th></tr> <tr><td>UHQ</td><td>Super High Q Chip Inductor</td></tr> </table>	Type		UHQ	Super High Q Chip Inductor	<table border="1"> <tr><th colspan="2">External Dimensions (LxW) (mm)</th></tr> <tr><td>0402[01005]</td><td>0.4x0.2</td></tr> </table>		External Dimensions (LxW) (mm)		0402[01005]	0.4x0.2	<table border="1"> <tr><th colspan="2">Characteristics Code</th></tr> <tr><td>H</td><td>Chip Thickness=0.20mm</td></tr> </table>		Characteristics Code		H	Chip Thickness=0.20mm	<table border="1"> <tr><th colspan="2">Packing</th></tr> <tr><td>P</td><td>Plastic Tape Carrier Package</td></tr> </table>		Packing		P	Plastic Tape Carrier Package												
Type																																		
UHQ	Super High Q Chip Inductor																																	
External Dimensions (LxW) (mm)																																		
0402[01005]	0.4x0.2																																	
Characteristics Code																																		
H	Chip Thickness=0.20mm																																	
Packing																																		
P	Plastic Tape Carrier Package																																	
④		⑤		⑥		⑦																												
<table border="1"> <tr><th colspan="2">Nominal Inductance</th></tr> <tr><th>Example</th><th>Nominal Value</th></tr> <tr><td>3N9</td><td>3.9nH</td></tr> <tr><td>10N</td><td>10nH</td></tr> <tr><td colspan="2">※N=nH</td></tr> </table>		Nominal Inductance		Example	Nominal Value	3N9	3.9nH	10N	10nH	※N=nH		<table border="1"> <tr><th colspan="2">Inductance Tolerance</th></tr> <tr><td>B</td><td>±0.1nH</td></tr> <tr><td>C</td><td>±0.2nH</td></tr> <tr><td>S</td><td>±0.3nH</td></tr> <tr><td>G</td><td>±2%</td></tr> <tr><td>H</td><td>±3%</td></tr> <tr><td>J</td><td>±5%</td></tr> </table>		Inductance Tolerance		B	±0.1nH	C	±0.2nH	S	±0.3nH	G	±2%	H	±3%	J	±5%	<table border="1"> <tr><th colspan="2">Serial Code</th></tr> <tr><td>01</td><td>Internal code</td></tr> </table>		Serial Code		01	Internal code	
Nominal Inductance																																		
Example	Nominal Value																																	
3N9	3.9nH																																	
10N	10nH																																	
※N=nH																																		
Inductance Tolerance																																		
B	±0.1nH																																	
C	±0.2nH																																	
S	±0.3nH																																	
G	±2%																																	
H	±3%																																	
J	±5%																																	
Serial Code																																		
01	Internal code																																	

SHAPE AND DIMENSIONS

Unit: mm [inch]



Type	L	W	T	a	b	c
0402 [01005]	0.4±0.02 [.016±.0008]	0.2±0.02 [.008±.0008]	0.2±0.02 [.008±.0008]	0.14±0.03 [.005±.0010]	0.14±0.03 [.005±.0010]	0.17±0.03 [.006±.0010]

SPECIFICATIONS

UHQ0402H Series

Part Number	Inductance	Min. Quality Factor	L, Q Test Freq.	Typical Q @ Freq. (GHz)					Min. Self-resonant Frequency	Max. DC Resistance	Max. Rated Current
				0.5	0.8	1.8	2.0	2.4			
Units	nH	-	MHz	-					MHz	Ω	mA
Symbol	L	Q	Freq.	Q					S.R.F	DCR	I _r
UHQ0402H0N2□P01	0.2	-	500	-	-	-	-	-	16600	0.08	990
UHQ0402H0N3□P01	0.3	-	500	-	-	-	-	-	16600	0.08	990
UHQ0402H0N4□P01	0.4	-	500	-	-	-	-	-	16600	0.08	990
UHQ0402H0N5□P01	0.5	-	500	-	-	-	-	-	16600	0.08	730
UHQ0402H0N6□P01	0.6	13	500	18	23	40	42	51	16600	0.08	730
UHQ0402H0N7□P01	0.7	13	500	18	23	39	41	49	16600	0.08	730
UHQ0402H0N8□P01	0.8	13	500	18	23	38	41	48	16600	0.11	630
UHQ0402H0N9□P01	0.9	13	500	18	23	38	40	48	16600	0.11	580
UHQ0402H1N0□P01	1	13	500	17	22	37	40	48	16600	0.11	580
UHQ0402H1N1□P01	1.1	13	500	17	22	37	39	41	16600	0.11	580
UHQ0402H1N2□P01	1.2	13	500	17	22	36	38	40	16600	0.17	550
UHQ0402H1N3□P01	1.3	13	500	17	22	35	37	39	16000	0.17	400
UHQ0402H1N4□P01	1.4	13	500	17	22	35	36	43	15000	0.17	400
UHQ0402H1N5□P01	1.5	13	500	17	22	35	36	37	15000	0.17	390
UHQ0402H1N6□P01	1.6	13	500	17	22	35	37	40	15000	0.23	390
UHQ0402H1N7□P01	1.7	13	500	17	20	35	37	40	15000	0.23	380
UHQ0402H1N8□P01	1.8	13	500	17	21	34	36	39	15000	0.23	380
UHQ0402H1N9□P01	1.9	13	500	17	20	34	36	40	13000	0.23	380
UHQ0402H2N0□P01	2	13	500	17	21	35	37	40	13000	0.24	380
UHQ0402H2N1□P01	2.1	13	500	17	20	33	36	40	13000	0.24	380
UHQ0402H2N2□P01	2.2	13	500	17	23	36	39	39	13000	0.24	380
UHQ0402H2N3□P01	2.3	13	500	17	21	34	36	43	13000	0.29	370
UHQ0402H2N4□P01	2.4	13	500	17	23	35	37	40	13000	0.29	370
UHQ0402H2N5□P01	2.5	13	500	17	21	34	36	40	11500	0.3	370
UHQ0402H2N6□P01	2.6	13	500	17	20	34	36	40	11500	0.3	370
UHQ0402H2N7□P01	2.7	13	500	17	21	34	36	39	11500	0.32	370
UHQ0402H2N8□P01	2.8	13	500	17	20	33	35	40	10000	0.32	360
UHQ0402H2N9□P01	2.9	13	500	17	20	32	35	40	10000	0.35	360
UHQ0402H3N0□P01	3.0	13	500	17	19	32	34	39	10000	0.35	360
UHQ0402H3N1□P01	3.1	13	500	17	20	32	35	40	10000	0.4	290
UHQ0402H3N2□P01	3.2	13	500	17	20	32	35	40	10000	0.4	290
UHQ0402H3N3□P01	3.3	13	500	17	20	33	35	37	10000	0.4	290
UHQ0402H3N4□P01	3.4	13	500	17	19	31	33	37	9700	0.4	280
UHQ0402H3N5□P01	3.5	13	500	17	19	32	34	36	9700	0.4	280
UHQ0402H3N6□P01	3.6	13	500	17	19	31	33	35	9700	0.4	280
UHQ0402H3N7□P01	3.7	13	500	17	19	31	33	37	9700	0.4	270
UHQ0402H3N8□P01	3.8	13	500	17	19	31	33	36	9700	0.48	270
UHQ0402H3N9□P01	3.9	13	500	17	19	28	29	34	9700	0.48	270
UHQ0402H4N0□P01	4	13	500	17	18	29	32	34	9000	0.48	270
UHQ0402H4N1□P01	4.1	13	500	17	19	29	32	35	9000	0.6	270
UHQ0402H4N2□P01	4.2	13	500	17	19	31	33	35	9000	0.6	270
UHQ0402H4N3□P01	4.3	13	500	17	19	29	32	35	9000	0.6	270
UHQ0402H4N7□P01	4.7	13	500	17	19	28	31	34	8500	0.6	270
UHQ0402H5N1□P01	5.1	13	500	17	19	29	32	35	7800	0.6	250
UHQ0402H5N6□P01	5.6	13	500	17	20	34	35	37	7800	0.65	230
UHQ0402H6N2□P01	6.2	13	500	17	20	34	35	36	7200	0.7	220
UHQ0402H6N8□P01	6.8	13	500	17	21	33	35	37	6600	0.8	210
UHQ0402H7N5□P01	7.5	13	500	16	21	32	35	37	6600	0.8	200

SPECIFICATIONS

UHQ0402H Series

Part Number	Inductance	Min. Quality Factor	L, Q Test Freq.	Typical Q @ Freq. (GHz)					Min. Self-resonant Frequency	Max. DC Resistance	Max. Rated Current
				0.5	0.8	1.8	2.0	2.4			
Units	nH	-	MHz	-					MHz	Ω	mA
Symbol	L	Q	Freq.	Q					S.R.F	DCR	I _r
UHQ0402H8N2□P01	8.2	13	500	17	23	33	35	37	6600	0.85	190
UHQ0402H9N1□P01	9.1	13	500	17	23	32	35	36	5900	0.95	170
UHQ0402H10N□P01	10	13	500	16	22	29	33	35	5900	0.95	170
UHQ0402H11N□P01	11	13	500	16	22	28	29	32	3500	1.1	140
UHQ0402H12N□P01	12	13	500	16	22	28	29	32	3500	1.2	140
UHQ0402H13N□P01	13	12	500	16	22	26	28	29	3000	1.3	140
UHQ0402H15N□P01	15	12	500	16	21	26	28	29	3000	1.4	140
UHQ0402H16N□P01	16	12	500	16	21	26	28	29	3000	1.4	140
UHQ0402H18N□P01	18	10	500	16	21	26	28	29	2500	1.5	140
UHQ0402H20N□P01	20	10	500	16	19	24	25	26	2500	1.5	140

※□: Please specify the inductance tolerance. For $L \leq 4.2\text{nH}$, choose $B = \pm 0.1\text{nH}$, $C = \pm 0.2\text{nH}$ or $S = \pm 0.3\text{nH}$; For $4.2\text{nH} < L < 5.6\text{nH}$, choose, $H = \pm 3\%$, $J = \pm 5\%$ or $S = \pm 0.3\text{nH}$; For $L \geq 5.6\text{nH}$, choose, $H = \pm 3\%$, $J = \pm 5\%$

※: Please refer to "Measurement Notice for RF Inductors".